

Tri-Canada

SANITARY FITTINGS



THE RIGHT PRODUCT THE RIGHT PRICE



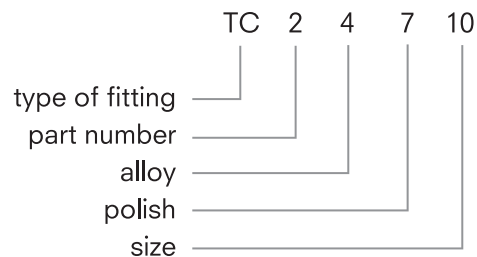
We have the most responsive inside sales people in the business, backed up by strong technical support and same or next day delivery on key items.

Tri-Canada originally started as a Tri-Clover distributor back in 1962. Tri-Canada Industries Ltd. was formed as a successor company to TCI-Superior in 1988. We've seen a lot of changes over the past forty years, but we're still here, primarily because we still do a very good job selling top quality products.

Our core product line remains the same:

Stainless Steel Components for Fluid Handling Applications.

HOW TO ORDER



TYPE OF FITTING

T - WELD STYLE
TC - CLAMP STYLE
TV - SCHEDULE MATERIAL

ALLOY (all fittings are T304L or T316L)

4-304L
6-316L

POLISH

1 MILL FINISH ID & OD
3 MILL FINISH OD WITH A STANDARD 180 GRIT ID FINISH
5 MILL FINISH ID WITH A STANDARD 150 GRIT OD FINISH
7 180 GRIT ID AND 150 GRIT OD FINISH AS STANDARD

PART NUMBER

2	ELBOW	21	MALE ADAPTER
7	TEE	22	FEMALE ADAPTER
9	CROSS	23	THERMOMETER CAP
13	CLAMP	28WA	LATERAL
14	FERRULE - RUBBER	28B	TRUE Y
	HOSE & TYGON	31	CONCENTRIC REDUCER
16	CAP	32	ECCENTRIC REDUCER
17	ADAPTER	38	FLANGE
19	ADAPTER	45	CHECK VALVE

SIZING

05 = 0.5"	15 = 1.5"	30 = 3"	80 = 8"
075 = 0.75"	20 = 2"	40 = 4"	
10 = 1"	25 = 2.5"	60 = 6"	

TABLE OF CONTENTS

Page #1	Table of Contents
Page #2	Sanitary Tri-Clamp Fittings
Page #8	Sanitary Buttweld Fittings
Page #12	Sanitary Bevel Seat Fittings
Page #15	Other Fittings
Page #17	Miscellaneous Components
Page #19	Sanitary Hose Assemblies
Page #20	Sanitary Gaskets
Page #21	Other Sanitary Fluid Handling Components available from Tri-Canada

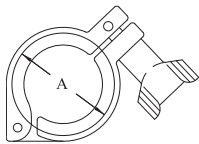
SANITARY TRI-CLAMP FITTINGS

Sanitary Tri-Clamp style fittings are most popular for the easy assembly and breakdown of process lines and equipment. Tri-Canada offers Sanitary Tri-Clamp fittings in T304 and T316L materials in 1/2" through 12" sizes.

Gaskets for Tri-Clamp fittings are available in several different materials, including Buna-N, EPDM, Teflon®, Viton®, Silicone and Tuf-Steel.

TC13HC HEAVY DUTY CLAMP

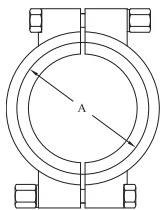
SIZE (TUBE O.D.)	A	WEIGHT (LBS)
1/2, 3/4	1.120	.40
1, 1½	2.122	.60
2	2.654	.70
2½	3.185	.80
3	3.717	1.00
4	4.820	1.20
6	6.695	2.70
8	8.695	3.30



NOTE: 3 PIECE CLAMP ALSO AVAILABLE

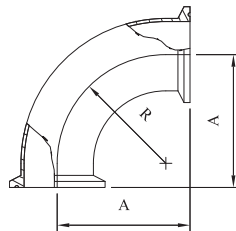
TC13HP HIGH PRESSURE CLAMP

SIZE (TUBE O.D.)	A	WEIGHT (LBS)
1, 1½	2.046	.75
2	2.578	.85
2½	3.110	.95
3	3.640	1.10
4	4.744	1.40
6	6.632	2.80



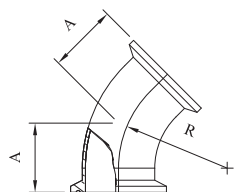
TC2 90° ELBOW

SIZE (TUBE O.D.)	A	R	WEIGHT (LBS)
½	3½	¾	.28
¾	3½	1⅛	.31
1	2	1½	.35
1½	2¾	2¼	.45
2	3½	3	.80
2½	4¼	3¾	1.00
3	5	4½	2.00
4	6⅞	6	3.67
6	9⅞	9	10.33
8	12⅞	12	19.70



TC2K 45° ELBOW

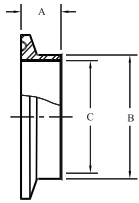
SIZE (TUBE O.D.)	A	R	WEIGHT (LBS)
½	2¾	¾	.20
¾	2¾	1⅛	.21
1	1⅞	1½	.25
1½	17/16	2¼	.30
2	1¾	3	.50
2½	21/16	3¾	.60
3	23/8	4½	1.20
4	3⅞	6	2.25
6	4⅞	9	6.06
8	5⅞	12	8.90



SANITARY TRI-CLAMP FITTINGS

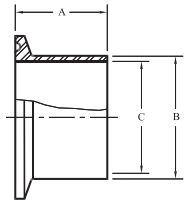
TC 14X SHORT WELDING FERRULE

SIZE (TUBE O.D.)	A	B	C	APPROX WT. (LBS.)
½	0.500	0.500	0.375	0.04
¾	0.500	0.750	0.625	0.05
1	0.500	1.000	0.870	0.12
1 ½	0.500	1.500	1.370	0.09
2	0.500	2.000	1.870	0.12
2 ½	0.500	2.500	2.370	0.15
3	0.500	3.000	2.870	0.18
4	0.625	4.000	3.834	0.38
6	0.750	6.000	5.782	0.42



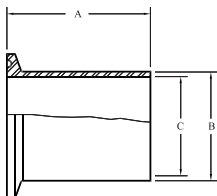
TC 14AM7 LONG WELDING FERRULE

SIZE (TUBE O.D.)	A	B	C	APPROX WT. (LBS.)
1	1.125	1.000	0.870	0.09
1 ½	1.125	1.500	1.370	0.13
2	1.125	2.000	1.870	0.20
2 ½	1.125	2.500	2.370	0.25
3	1.125	3.000	2.870	0.31
4	1.125	4.000	3.384	0.56
6	1.125	6.000	5.782	1.20



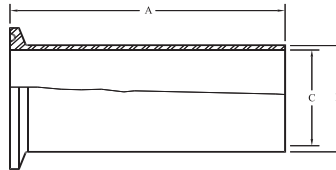
TC 14 TANK WELDING SPUD (LIGHT)

SIZE (TUBE O.D.)	A	B	C	APPROX WT. (LBS.)
1	3.000	1.000	0.870	0.16
1 ½	3.000	1.500	1.370	0.21
2	3.000	2.000	1.870	0.40
2 ½	3.000	2.500	2.370	0.54
3	4.000	3.000	2.870	0.77
4	4.000	4.000	3.834	1.25



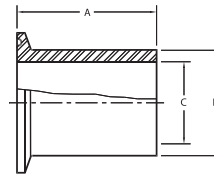
TC 14AHT TYGON HOSE ADAPTER

SIZE (TUBE O.D.)	A	B	C	APPROX WT. (LBS.)
1	4.500	1.000	0.870	0.31
1 ½	4.500	1.500	1.370	0.50
2	4.500	2.000	1.870	0.68
2 ½	4.500	2.500	2.370	0.87
3	4.500	3.000	2.870	1.12
4	4.625	4.000	3.834	1.68



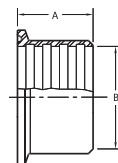
TC 14H TANK FERRULE (HEAVY - WALLED)

SIZE (TUBE O.D.)	A	B	C	APPROX WT. (LBS.)
1	1.625	1.160	0.870	0.17
1 ½	1.625	1.676	1.370	0.35
2	1.750	2.192	1.870	0.69
2 ½	1.750	2.708	2.370	1.00
3	1.813	3.224	2.870	1.40
4	2.125	4.256	3.834	2.50



TC 14EX RECESSLESS FERRULE (EXPANDING)

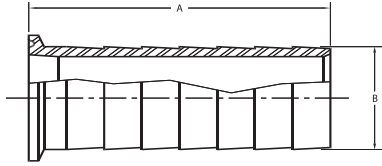
SIZE (TUBE O.D.)	A	B	APPROX WT. (LBS.)
1 ½	1.125	1.500	0.13
2	1.313	2.000	0.25
2 ½	1.375	2.500	0.34
3	1.438	3.000	0.47
4	1.500	4.000	0.70



SANITARY TRI-CLAMP FITTINGS

TC14HR RUBBER HOSE ADAPTER

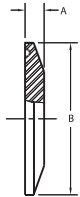
SIZE (TUBE O.D.)	A	B	APPROX. WT.(LBS)
1	3.500	1.031	0.35
1 ½	3.500	1.625	0.45
2	4.500	2.125	0.95
2 ½	4.500	2.625	1.25
3	4.500	3.125	1.75
4	6.250	4.125	2.75



NOTE: REDUCING + FRACTIONAL HOSE ADAPTERS AVAILABLE ON REQUEST.

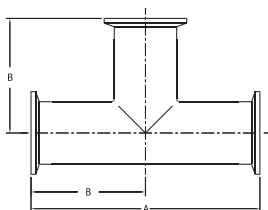
TC16 SOLID END CAP

SIZE (TUBE O.D.)	A	B	APPROX. WT.(LBS.)
½ & ¾	0.187	0.984	0.03
1 & 1 ½	0.250	1.984	0.15
2	0.250	2.516	0.31
2 ½	0.250	3.047	0.44
3	0.250	3.579	0.90
4	0.312	4.682	1.25
6	0.437	6.570	3.90



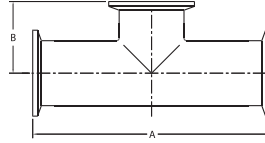
TC7 TEE

SIZE (TUBE O.D.)	A	B	APPROX. WT.(LBS.)
½	4.500	2.250	0.35
¾	4.750	2.375	0.35
1	4.750	2.375	0.38
1 ½	5.500	2.750	0.69
2	7.000	3.500	1.38
2 ½	7.000	3.500	1.59
3	7.500	3.750	2.50
4	9.000	4.500	3.88
6	11.500	5.750	12.20



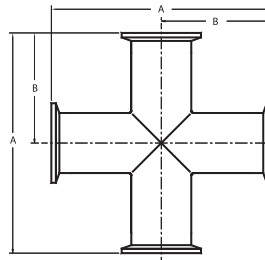
TC7S SHORT OUTLET TEE

SIZE (TUBE O.D.)	A	B	APPROX. WT.(LBS.)
½	4.500	1.000	0.29
¾	4.750	1.125	0.29
1	4.750	1.125	0.33
1 ½	5.500	1.375	0.63
2	7.000	1.625	1.35
2 ½	7.000	1.875	1.50
3	7.500	2.125	2.45
4	9.000	2.750	3.80
6	11.500	3.875	11.90



TC9 CROSS

SIZE (TUBE O.D.)	A	B	APPROX. WT.(LBS.)
½	4.500	2.625	0.44
¾	4.750	2.625	0.44
1	4.750	2.375	0.56
1 ½	5.500	2.750	0.88
2	7.000	3.500	1.57
2 ½	7.000	3.500	1.78
3	7.500	3.750	2.79
4	9.000	4.500	4.14

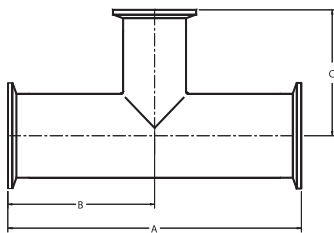


**quick same-day shipments,
next day delivery
for sanitary stainless steel products**

SANITARY TRI-CLAMP FITTINGS

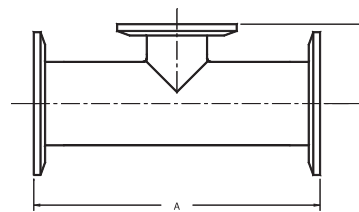
TC7R REDUCING TEE

SIZE (TUBE O.D.)	A	B	C	APPROX. WT.(LBS.)
¾ x ½	5.250	2.625	2.625	0.35
1 x ½	5.250	2.625	2.625	0.38
1 x ¾	5.250	2.625	2.625	0.38
1½ x ½	5.750	2.875	2.875	0.69
1½ x ¾	5.750	2.875	2.875	0.69
1½ x 1	5.125	2.563	2.407	1.25
2 x ½	7.250	3.625	3.250	1.38
2 x ¾	7.250	3.625	3.250	1.38
2 x 1	5.125	2.563	2.125	1.35
2 x 1½	5.125	2.563	2.407	1.38
2½ x ½	7.000	3.500	3.375	1.40
2½ x ¾	7.000	3.500	3.375	1.40
2½ x 1	7.000	3.500	3.750	1.65
2½ x 1½	7.000	3.500	3.250	1.65
2½ x 2	5.688	2.844	2.813	1.59
3 x ½	7.500	3.750	3.625	2.65
3 x ¾	7.500	3.750	3.625	2.65
3 x 1	7.500	3.750	3.625	2.75
3 x 1½	7.500	3.750	3.500	2.80
3 x 2	6.188	3.094	3.063	2.50
3 x 2½	6.188	3.094	3.094	2.50
4 x ½	9.000	4.500	4.125	3.35
4 x ¾	9.000	4.500	4.125	3.35
4 x 1	9.000	4.500	4.125	3.36
4 x 1½	9.000	4.500	4.125	3.25
4 x 2	9.000	4.500	4.500	3.36
4 x 2½	9.000	4.500	4.250	3.31
4 x 3	9.000	4.500	4.250	3.67
6 x 1	11.500	5.750	5.500	7.40
6 x 1½	11.500	5.750	5.500	7.50
6 x 2	11.500	5.750	5.500	7.60
6 x 2½	11.500	5.750	5.500	7.66
6 x 3	11.500	5.750	5.500	7.75
6 x 4	11.500	5.750	5.500	7.86



TC7RS SHORT OUTLET REDUCING TEE

SIZE (TUBE O.D.)	A	B	APPROX. WT.(LBS.)
¾ x ½	4.750	1.000	0.29
1 x ½	5.250	1.125	0.33
1 x ¾	5.250	1.125	0.33
1½ x ½	5.750	1.375	0.63
1½ x ¾	5.750	1.375	0.63
1½ x 1	5.125	1.375	0.65
2 x ½	7.250	1.625	1.20
2 x ¾	7.250	1.625	1.20
2 x 1	5.125	1.625	1.20
2 x 1½	5.125	1.625	1.20
2½ x ½	7.000	1.875	1.20
2½ x ¾	7.000	1.875	1.20
2½ x 1	7.000	1.875	1.20
2½ x 1½	7.000	1.875	1.20
2½ x 2	5.688	1.875	1.20
3 x ½	7.500	2.125	2.10
3 x ¾	7.500	2.125	2.10
3 x 1	7.500	2.125	2.10
3 x 1½	7.500	2.125	2.10
3 x 2	6.188	2.125	2.15
3 x 2½	6.188	2.125	2.20
4 x ½	9.000	2.625	3.15
4 x ¾	9.000	2.625	3.15
4 x 1	9.000	2.625	3.15
4 x 1½	9.000	2.625	3.20
4 x 2	9.000	2.625	3.25
4 x 2½	9.000	2.625	3.27
4 x 3	9.000	2.625	3.50
6 x 1	11.500	3.625	7.10
6 x 1½	11.500	3.625	7.10
6 x 2	11.500	3.625	7.25
6 x 2½	11.500	3.625	7.36
6 x 3	11.500	3.625	7.50
6 x 4	11.500	3.750	7.65

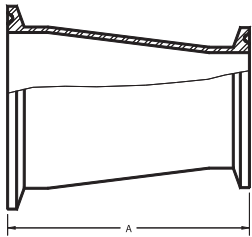


**working with Canada's mechanical
contractors providing quick and
efficient service to our customers**

SANITARY TRI-CLAMP FITTINGS

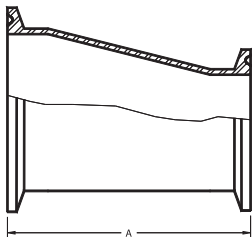
TC31 CONCENTRIC REDUCER

SIZE (TUBE O.D.)	A	APPROX. WT. (LBS.)	SIZE (TUBE O.D.)	A	APPROX. WT. (LBS.)
¾ x ½	2.000	0.22	3 x ½	9.500	2.70
1 x ½	3.000	0.23	3 x ¾	9.000	2.55
1 x ¾	2.000	0.24	3 x 1	9.000	2.56
1½ x ½	5.000	0.26	3 x 1½	7.000	1.24
1½ x ¾	4.000	0.26	3 x 2	5.000	1.10
1½ x 1	3.000	0.30	3 x 2½	3.000	0.75
2 x ½	7.000	0.65	4 x ½	13.625	4.15
2 x ¾	6.000	0.70	4 x ¾	13.125	4.20
2 x 1	5.000	0.70	4 x 1	13.125	4.20
2 x 1½	3.000	0.40	4 x 1½	11.125	3.50
2½ x ½	9.000	0.95	4 x 2	9.125	3.10
2½ x ¾	8.000	0.80	4 x 2½	7.125	2.80
2½ x 1	7.000	0.80	4 x 3	5.125	3.10
2½ x 1½	5.000	0.64	6 x 3	7.250	3.25
2½ x 2	3.000	0.53	6 x 4	5.375	2.50



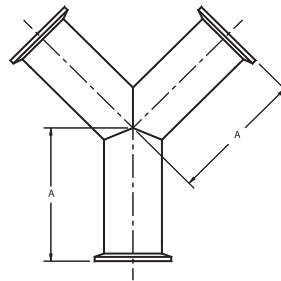
TC32 ECCENTRIC REDUCER

SIZE (TUBE O.D.)	A	APPROX. WT. (LBS.)	SIZE (TUBE O.D.)	A	APPROX. WT. (LBS.)
¾ x ½	2.000	0.22	3 x ½	9.500	2.70
1 x ½	3.000	0.23	3 x ¾	9.000	2.55
1 x ¾	2.000	0.24	3 x 1	9.000	2.56
1½ x ½	5.000	0.26	3 x 1½	7.000	1.24
1½ x ¾	4.000	0.26	3 x 2	5.000	1.10
1½ x 1	3.000	0.30	3 x 2½	3.000	0.75
2 x ½	7.000	0.65	4 x ½	13.625	4.15
2 x ¾	6.000	0.70	4 x ¾	13.125	4.20
2 x 1	5.000	0.70	4 x 1	13.125	4.20
2 x 1½	3.000	0.40	4 x 1½	11.125	3.50
2½ x ½	9.000	0.95	4 x 2	9.125	3.10
2½ x ¾	8.000	0.80	4 x 2½	7.125	2.80
2½ x 1	7.000	0.80	4 x 3	5.125	3.10
2½ x 1½	5.000	0.64	6 x 3	7.250	3.25
2½ x 2	3.000	0.53	6 x 4	5.375	2.50



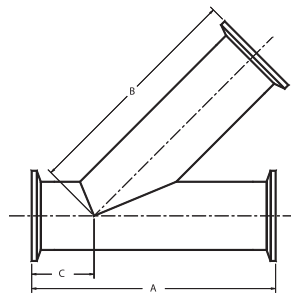
TC28B TRUE "Y"

SIZE (TUBE O.D.)	A	APPROX. WT. (LBS.)
½	2.500	0.35
¾	2.500	0.45
1	3.500	0.90
1½	3.500	1.10
2	4.500	1.90
2½	5.500	2.33
3	6.500	3.01
4	8.625	5.15
6	8.750	12.70



TC28A LATERAL "Y"

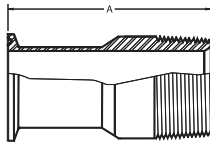
SIZE (TUBE O.D.)	A	B	C	APPROX. WT. (LBS.)
½	5.000	3.500	1.500	0.40
¾	5.000	3.500	1.500	0.55
1	4.625	4.313	1.250	0.91
1½	5.375	5.063	1.375	1.22
2	6.125	5.500	1.625	1.99
2½	7.625	6.875	2.125	2.90
3	9.500	8.250	2.500	3.46
4	11.750	10.000	3.000	7.40
6	18.000	13.250	4.750	15.55



SANITARY TRI-CLAMP FITTINGS

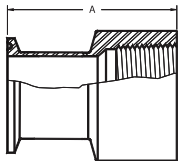
TC21 CLAMP X MALE N.P.T. ADAPTER
FRACTIONAL (1/2 & 3/4)

SIZE (TUBE O.D.)	A	APPROX. WT. (LBS.)
1/2 x 1/8	2.000	0.12
1/2 x 1/4	2.000	0.12
1/2 x 3/8	2.000	0.13
1/2 x 1/2	2.000	0.14
1/2 x 3/4	2.000	0.15
3/4 x 1/8	2.000	0.13
3/4 x 1/4	2.000	0.13
3/4 x 3/8	2.000	0.14
3/4 x 1/2	2.000	0.15
3/4 x 3/4	2.000	0.16



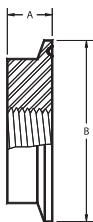
TC22 CLAMP X FEMALE N.P.T. ADAPTER
FRACTIONAL (1/2 & 3/4)

SIZE (TUBE O.D.)	A	APPROX. WT. (LBS.)
1/2 x 1/8	1.250	0.25
1/2 x 1/4	1.500	0.25
1/2 x 3/8	1.500	0.27
1/2 x 1/2	1.500	0.28
1/2 x 3/4	1.625	0.28
3/4 x 1/8	1.250	0.25
3/4 x 1/4	1.500	0.25
3/4 x 3/8	1.500	0.27
3/4 x 1/2	1.500	0.28
3/4 x 3/4	1.500	0.29



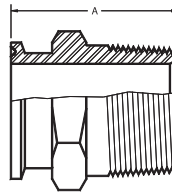
TC23B THERMOMETER CAP

SIZE (TUBE O.D.)	A	B	TAP (NPT)	APPROX. WT. (LBS.)
1	0.625	1.984	1/2	0.50
1 1/2	0.625	1.984	3/4	0.50
2	0.625	2.516	3/4	0.75
2 1/2	0.625	3.047	3/4	1.13
3	0.625	3.579	3/4	1.54
4	0.625	4.682	3/4	2.75



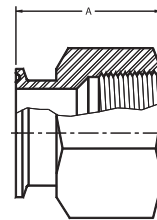
TC21 CLAMP X MALE N.P.T. ADAPTER

SIZE (TUBE O.D.)	A	APPROX. WT. (LBS.)
1 x 3/4	2.187	1.06
1 x 1	2.250	0.75
1 x 2	2.625	1.25
1 1/2 x 3/4	2.187	1.06
1 1/2 x 1	2.250	0.88
1 1/2 x 1 1/4	2.437	0.75
1 1/2 x 1 1/2	2.437	0.63
1 1/2 x 2	2.625	1.63
2 x 1 1/2	2.468	1.75
2 x 2	2.656	1.50
2 1/2 x 2	2.781	1.94
2 1/2 x 2 1/2	3.812	1.75
3 x 3	3.000	3.25
4 x 4	3.188	5.75



TC22 CLAMP X FEMALE N.P.T. ADAPTER

SIZE (TUBE O.D.)	A	APPROX. WT. (LBS.)
1 x 3/4	1.625	0.75
1 x 1	1.625	0.56
1 1/2 x 3/4	1.625	0.75
1 1/2 x 1	1.625	0.75
1 1/2 x 1 1/4	2.250	0.56
1 1/2 x 1 1/2	2.250	0.38
2 x 1 1/2	2.250	1.75
2 x 2	2.343	1.13
2 1/2 x 1 1/2	2.000	1.88
2 1/2 x 2	2.093	1.50
2 1/2 x 2 1/2	2.250	1.25
3 x 3	2.187	2.38
4 x 4	2.656	4.00

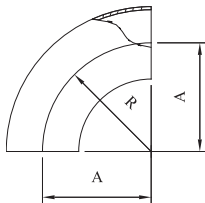


SANITARY BUTTWELD FITTINGS

Weld Fittings are used on permanent installations where process piping and equipment can be cleaned in place (CIP) and removal from the system is not required. Weld Fittings are offered in nominal tube sizes 1/2" through 8" in T304 and T316L materials. Uniform wall thickness for 1/2" through 3" sizes measures .065 (16 ga). In 4" size, wall thickness measures .083 (14 ga), 6" and 8" are .109 (12 ga). Tri-Canada offers polished and unpolished ID and OD Fittings for immediate shipment.

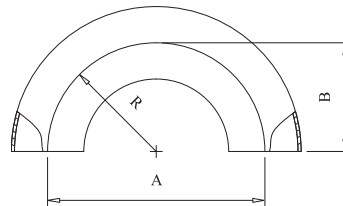
T2SX 90° ELBOW (SHORT TANGENT)

SIZE (TUBE O.D.)	A	WEIGHT (LBS)
1/2	3/4	.03
3/4	1 1/8	.07
1	1 1/2	.12
1 1/2	2 1/4	.30
2	3	.54
2 1/2	3 3/4	.82
3	4 1/2	1.20
4	6	2.70
6	9	8.53
8	12	15.25



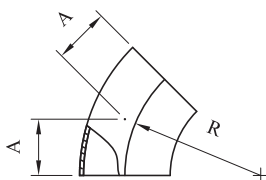
T2WU 180° RETURN BEND

SIZE (TUBE O.D.)	A	B	WEIGHT (LBS)
1/2	1 1/2	1	.06
3/4	2 1/4	1 1/2	.14
1	3	2	.24
1 1/2	4 1/2	3	.60
2	6	4	1.08
2 1/2	7 1/2	5	1.64
3	9	6	2.40
4	12	8	5.44
6	18	12	17.06



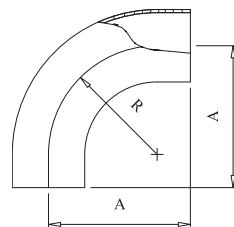
T2KSX 45° ELBOW (SHORT TANGENT)

SIZE (TUBE O.D.)	A	WEIGHT (LBS)
1/2	5/16	.15
3/4	15/32	.04
1	5/8	.06
1 1/2	15/16	.15
2	1 1/4	.27
2 1/2	1 9/16	.41
3	1 7/8	.60
4	2 1/2	1.35
6	3 3/4	4.26
8	5	7.25



T2S 90° TUBE BEND (LONG TANGENT)

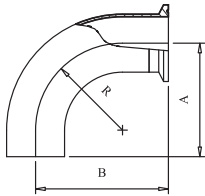
SIZE (TUBE O.D.)	A	B	WEIGHT (LBS)
1/2	3	.065	.17
3/4	3	.065	.30
1	2 1/16	.065	.17
1 1/2	2 15/16	.065	.42
2	4 1/16	.065	.77
2 1/2	5 3/16	.065	1.27
3	6 5/16	.065	1.85
4	8 5/16	.083	4.20
6	12	.109	5.75



SANITARY BUTTWELD FITTINGS

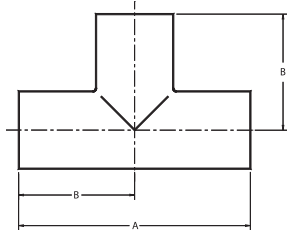
TC2C 90° SWEEP ELBOW (1 END TRI-CLAMP)

SIZE (TUBE O.D.)	A	B	WEIGHT (LBS)
1	2 1/16	2 9/16	.34
1½	2 15/16	3 7/16	.43
2	4 1/16	4 9/16	.93
2½	5 3/16	5 11/16	1.50
3	6 5/16	6 13/16	2.12
4	8 5/16	8 15/16	4.60



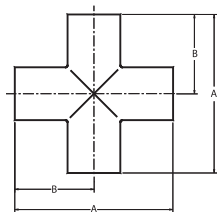
T7W TEE

SIZE (TUBE O.D.)	A	B	APPROX. WT. (LBS.)
1	3.750	1.875	0.28
1½	4.500	2.250	0.46
2	6.000	3.000	0.98
2½	6.000	3.000	1.32
3	6.500	3.250	1.76
4	7.750	3.875	2.89
6	10.000	5.000	8.00



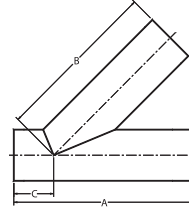
T9W CROSS

SIZE (TUBE O.D.)	A	B	APPROX. WT.(LBS.)
1	3.750	1.875	0.34
1½	4.500	2.250	0.60
2	6.000	3.000	1.38
2½	6.000	3.000	1.90
3	6.500	3.250	2.11
4	7.750	3.875	3.40
6	10.000	5.000	9.50



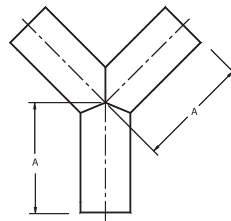
T28WA LATERAL "Y"

SIZE (TUBE O.D.)	A	B	C	APPROX. WT. (LBS.)
½	6.000	5.000	1.000	0.20
¾	6.000	5.000	1.000	0.31
1	6.000	5.000	1.000	0.62
1½	7.375	6.813	1.188	1.10
2	8.750	7.125	1.625	1.80
2½	10.000	8.500	1.500	2.45
3	10.750	8.875	1.875	3.12
4	12.813	10.750	2.063	6.60
6	16.500	12.500	4.000	15.40



T28BW TRUE "Y"

SIZE (TUBE O.D.)	A	APPROX. WT.(LBS.)
½	2.000	0.22
¾	2.000	0.34
1	3.000	0.55
1½	3.000	0.76
2	4.000	1.24
2½	5.000	1.92
3	6.000	2.65
4	8.000	4.60
6	8.000	11.40



T16W CAP

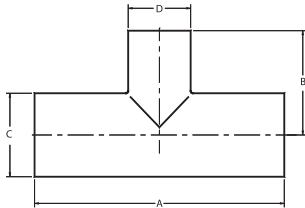
SIZE (TUBE O.D.) A	B	C	APPROX. WT. (LBS.)
1	0.438	0.870	0.05
1½	0.563	1.370	0.09
2	0.750	1.870	0.25
2½	1.063	2.370	0.29
3	1.125	2.870	0.33
4	1.250	3.834	0.56



SANITARY BUTTWELD FITTINGS

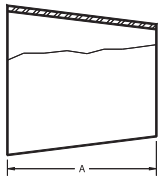
T7WR REDUCING TEE

SIZE (TUBE O.D) C x D	A	B	APPROX. WT.(LBS.)
1½ x 1	4.500	2.125	0.50
2 x 1	6.000	2.375	0.85
2 x 1½	6.000	2.500	0.90
2½ x 1	6.000	2.750	1.10
2½ x 1½	6.000	2.750	1.15
2½ x 2	6.000	3.250	1.20
3 x 1	6.500	3.125	1.40
3 x 1½	6.500	3.000	1.40
3 x 2	6.500	3.500	1.50
3 x 2½	6.500	3.250	1.40
4 x 1	7.750	3.625	2.40
4 x 1½	7.750	3.625	2.50
4 x 2	7.750	4.000	2.60
4 x 2½	7.750	3.750	2.50
4 x 3	7.750	3.750	2.75
6 x 3	10.000	4.750	6.00
6 x 4	10.000	4.875	6.20



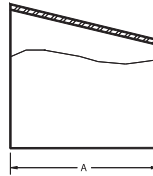
T31W CONCENTRIC REDUCER

SIZE (TUBE O.D)	A	APPROX WT. (LBS.)	SIZE (TUBE O.D)	A	APPROX WT. (LBS.)
1½ x 1	2.000	0.12	3 x 2½	2.000	0.30
2 x 1	4.000	0.34	4 x 1	12.000	1.12
2 x 1½	2.000	0.18	4 x 1½	10.000	1.80
2½ x 1	6.000	0.55	4 x 2	8.000	1.66
2½ x 1½	4.000	0.43	4 x 2½	6.000	1.50
2½ x 2	2.000	0.25	4 x 3	4.000	1.15
3 x 1	8.000	1.00	6 x 3	6.000	2.60
3 x 1½	6.000	0.93	6 x 4	4.000	1.92
3 x 2	4.000	0.56			



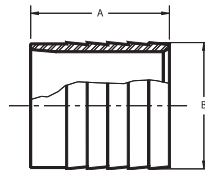
T32W ECCENTRIC REDUCER

SIZE (TUBE O.D)	A	APPROX WT. (LBS.)	SIZE (TUBE O.D)	A	APPROX WT. (LBS.)
1½ x 1	2.000	0.12	3 x 2½	2.000	0.30
2 x 1	4.000	0.34	4 x 1	12.000	1.12
2 x 1½	2.000	0.18	4 x 1½	10.000	1.80
2½ x 1	6.000	0.55	4 x 2	8.000	1.66
2½ x 1½	4.000	0.43	4 x 2½	6.000	1.50
2½ x 2	2.000	0.25	4 x 3	4.000	1.15
3 x 1	8.000	1.00	6 x 3	6.000	2.60
3 x 1½	6.000	0.93	6 x 4	4.000	1.92
3 x 2	4.000	0.56			



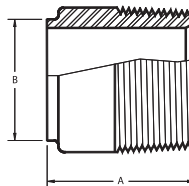
14WHR RUBBER HOSE ADAPTER

SIZE (TUBE O.D)	A	B	APPROX. WT.(LBS)
½	1.50	0.531	0.04
¾	1.50	0.781	0.06
1	3.00	1.031	0.09
1 ½	3.00	1.531	0.13
2	4.00	2.031	0.20
2 ½	4.00	2.531	0.25
3	4.00	3.031	0.31
4	5.63	4.031	0.56



T19W BUTTWELD X MALE N.P.T. ADAPTER

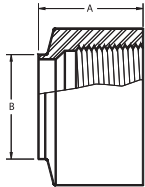
SIZE (TUBE O.D)	A	B	APPROX. WT.(LBS.)
1	1.750	1.000	0.50
1 ½	1.750	1.500	0.60
2	1.813	2.000	0.75
2 ½	2.313	2.500	1.20
3	2.500	3.000	2.00
4	2.563	4.000	2.60



SANITARY BUTTWELD FITTINGS

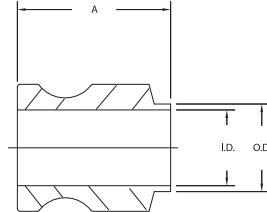
26EF BUTTWELD X FEMALE N.P.T. ADAPTER

SIZE (TUBE O.D.)	A	B	APPROX. WT.(LBS.)
1	1.375	1.000	0.75
1 ½	1.313	1.500	0.80
2	1.750	2.000	1.00
2 ½	1.813	2.500	2.20
3	2.250	3.000	3.50
4	2.375	4.000	5.40



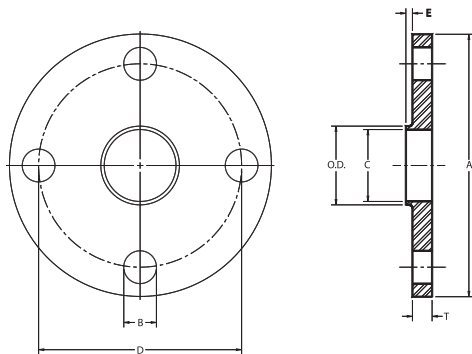
181W MALE CAMLOCK x BUTTWELD

SIZE (TUBE O.D.)	A	SIZE (TUBE I.D.)
1.00	0.87	1.75
1.50	1.37	2.00
2.00	1.87	2.25
2.50	2.37	2.25
3.00	2.87	2.25
4.00	3.83	2.50



T38W WELD NECK LIGHT-TYPE FLANGE - 150# BOLT HOLE PATTERN

SIZE (TUBE O.D.)	# OF BOLT HOLES	A	B	C	D	E	T	APPROX. WT.(LBS)
1	4	4.250	0.625	0.875	3.125	0.125	0.375	1.35
1 ½	4	5.000	0.625	1.375	3.875	0.125	0.375	1.85
2	4	6.000	0.750	1.875	4.750	0.125	0.438	3.45
2 ½	4	7.000	0.750	2.375	5.500	0.125	0.500	4.70
3	4	7.500	0.750	2.875	6.000	0.125	0.500	5.20
4	8	9.000	0.750	3.844	7.500	0.125	0.500	7.10
6	8	11.000	0.875	5.781	9.500	0.125	0.500	9.30



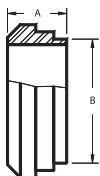
custom tube assemblies, fittings and modifications done to customers' specifications

SANITARY BEVEL SEAT FITTINGS

Bevel Seat Fittings are used on process equipment and piping to ensure the rigidity of the system. Bevel Seat Unions consist of a Threaded Bevel Ferrule mated with a Plain Bevel Ferrule. Both are offered in T304 and T316L material. Hex Union Nuts (T304 only) and gaskets are used to complete the union.

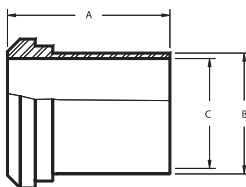
14WF PLAIN SHORT FERRULE

SIZE (TUBE O.D.)	A	B	APPROX WT. (LBS.)
1	0.688	1.000	0.10
1 ½	0.719	1.500	0.10
2	0.719	2.000	0.20
2 ½	0.844	2.500	0.31
3	0.906	3.000	0.43
4	1.219	4.000	0.69



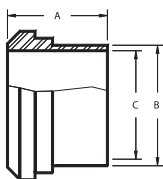
14WL PLAIN FERRULE TANK SPUD (LIGHT)

SIZE (TUBE O.D.)	A	B	C	APPROX WT. (LBS.)
1	2.000	1.000	0.870	0.09
1 ½	2.250	1.500	1.370	0.19
2	2.500	2.000	1.870	0.38
2 ½	2.750	2.500	2.370	0.54
3	3.000	3.000	2.870	0.78
4	4.000	4.000	3.834	1.24



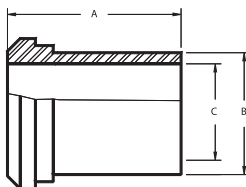
14A PLAIN TUBE FERRULE

SIZE (TUBE O.D.)	A	B	C	APPROX WT. (LBS.)
1	1.375	1.000	0.870	0.06
1 ½	1.500	1.500	1.370	0.25
2	1.500	2.000	1.870	0.37
2 ½	1.750	2.500	2.370	0.58
3	1.750	3.000	2.870	0.70
4	1.750	4.000	3.834	0.82



14W PLAIN FERRULE TANK SPUD (HEAVY)

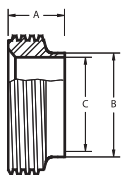
SIZE (TUBE O.D.)	A	B	C	APPROX WT. (LBS.)
1	2.375	1.156	0.870	0.34
1 ½	2.531	1.672	1.370	0.50
2	2.781	2.813	1.870	0.82
2 ½	3.063	2.703	2.370	1.25
3	3.531	3.531	2.870	2.64
4	4.313	4.250	3.834	3.45



SANITARY BEVEL SEAT FITTINGS

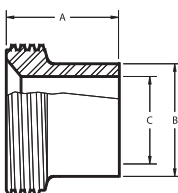
15WF THREADED SHORT WELD FERRULE

SIZE (TUBE O.D.)	A	B	C	APPROX WT. (LBS.)
1	0.688	1.000	0.870	0.15
1 ½	0.719	1.500	1.370	0.15
2	0.719	2.000	1.870	0.29
2 ½	0.844	2.500	2.370	0.45
3	0.906	3.000	2.870	0.62
4	1.219	4.000	3.834	1.15



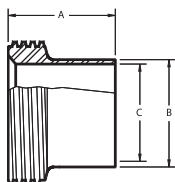
15W THREADED FERRULE TANK SPUD (HEAVY)

SIZE (TUBE O.D.)	A	B	C	APPROX WT. (LBS.)
1	1.500	1.250	0.870	0.17
1 ½	1.625	1.750	1.370	0.35
2	1.750	2.313	1.870	0.69
2 ½	1.750	2.875	2.370	1.00
3	1.813	3.375	2.870	1.40
4	2.125	4.250	3.834	2.50



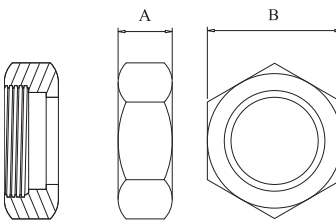
15A THREADED TUBE FERRULE

SIZE (TUBE O.D.)	A	B	C	APPROX WT. (LBS.)
1	1.375	1.000	0.870	0.09
1 ½	1.500	1.500	1.370	0.29
2	1.500	2.000	1.870	0.38
2 ½	1.750	2.500	2.370	0.63
3	1.750	3.000	2.870	0.87
4	1.750	4.000	3.834	1.29



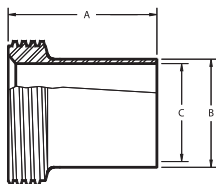
13H HEX UNION NUT

SIZE (TUBE O.D.)	A	B	WEIGHT (LBS)
1	29/32	1 13/16	.30
1 ½	31/32	2 13/32	.55
2	1 1/16	3	.83
2 ½	1 3/16	3 19/32	1.25
3	1 9/32	4 3/16	1.74
4	1 ½	5 7/16	3.28



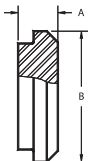
15WL THREADED FERRULE TANK SPUD (LIGHT)

SIZE (TUBE O.D.)	A	B	C	APPROX WT. (LBS.)
1	2.000	1.000	0.870	0.12
1 ½	2.250	1.500	1.370	0.25
2	2.500	2.000	1.870	0.49
2 ½	2.750	2.500	2.370	0.70
3	3.000	3.000	2.870	1.00
4	4.000	4.000	3.834	1.75



16A PLAIN CAP

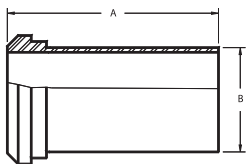
SIZE (TUBE O.D.)	A	B	APPROX. WT. (LBS.)
1	0.469	1.313	0.12
1 ½	0.563	1.844	0.30
2	0.625	2.375	0.65
2 ½	0.656	2.906	0.90
3	0.719	3.438	1.90
4	0.813	4.500	3.10



SANITARY BEVEL SEAT FITTINGS

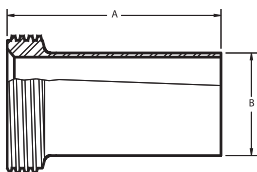
14AHT PLAIN X TYGON HOSE ADAPTER

SIZE (TUBE O.D.)	A	B	APPROX. WT.(LBS.)
1	4.688	1.000	0.31
1 ½	4.719	1.500	0.50
2	4.719	2.000	0.68
2 ½	4.844	2.500	0.87
3	4.906	3.000	1.12
4	5.219	4.000	1.68



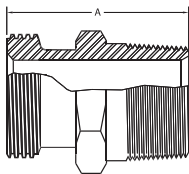
15AHT THREADED X TYGON HOSE ADAPTER

SIZE (TUBE O.D.)	A	B	APPROX. WT.(LBS.)
1	4.688	1.000	0.34
1 ½	4.719	1.500	0.56
2	4.719	2.000	0.79
2 ½	4.844	2.500	1.03
3	4.906	3.000	1.34
4	5.219	4.000	2.19



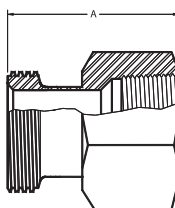
21 ACME THREAD X MALE N.P.T. ADAPTER

SIZE (TUBE O.D.)	A	APPROX. WT.(LBS.)
1 x ¾	2.188	0.48
1 x 1	2.250	0.50
1 ½ x 1 ¼	2.438	0.64
1 ½ x 1 ½	2.438	0.66
2 x 1 ½	2.469	0.96
2 x 2	2.656	1.12
2 ½ x 2	2.781	1.25
2 ½ x 2 ½	3.281	1.81
3 x 3	3.500	2.75
4 x 4	3.813	3.75



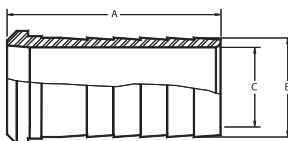
22 ACME THREAD X FEMALE N.P.T. ADAPTER

SIZE (TUBE O.D.)	A	APPROX. WT.(LBS.)
1 x ¾	1.625	0.36
1 x 1	2.063	0.38
1 ½ x 1 ¼	2.500	0.97
1 ½ x 1 ½	2.250	1.00
2 x 1 ½	1.656	1.16
2 x 2	2.344	1.44
2 ½ x 2	1.844	1.56
2 ½ x 2 ½	2.094	2.12
3 x 3	2.188	2.88
4 x 4	2.625	4.12



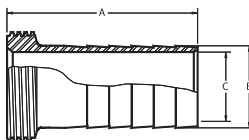
14AHR PLAIN X RUBBER HOSE ADAPTER

SIZE (TUBE O.D.)	A	B	C	APPROX. WT.(LBS.)
1	3.500	1.031	0.813	0.35
1 ½	3.500	1.625	1.313	0.45
2	4.500	2.125	1.813	0.95
2 ½	4.500	2.625	2.313	1.25
3	4.500	3.125	2.813	1.75
4	6.250	4.125	4.813	2.75



15AHR ACME THREADED X RUBBER HOSE ADAPTER

SIZE (TUBE O.D.)	A	B	C	APPROX. WT.(LBS.)
1	3.500	1.031	0.813	0.35
1 ½	3.500	1.625	1.313	0.45
2	4.500	2.125	1.813	0.95
2 ½	4.500	2.625	2.313	1.25
3	4.500	3.125	2.813	1.75
4	6.250	4.125	4.813	2.75



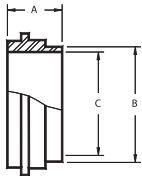
OTHER FITTINGS

OTHER FITTINGS

Tri-Canada offers the following special tube connections, as well as the clamps/nuts and gaskets for each.

14WJP JOHN PERRY TYPE FERRULE (SHORT)

SIZE (TUBE O.D)	A	B	C	APPROX WT. (LBS.)
1	0.688	1.000	.870	0.09
1 ½	0.718	1.500	1.370	0.10
2	0.810	2.000	1.870	0.18
2 ½	0.840	2.500	2.370	0.28
3	0.849	3.000	2.870	0.41
4	1.201	4.000	3.834	0.65



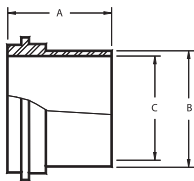
14WFF FLAT FACE WELD FERRULE

SIZE (TUBE O.D)	A	B	C	APPROX WT. (LBS.)
1	0.563	1.000	.870	0.06
1 ½	0.625	1.500	1.370	0.08
2	0.687	2.000	1.870	0.16
2 ½	0.625	2.500	2.370	0.26
3	0.656	3.000	2.870	0.38
4	1.000	4.000	3.834	0.62



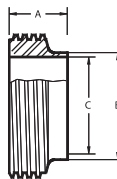
14AJP JOHN PERRY TYPE FERRULE (LONG)

SIZE (TUBE O.D)	A	B	C	APPROX WT. (LBS.)
1	1.375	1.000	.870	0.06
1 ½	1.500	1.500	1.370	0.22
2	1.500	2.000	1.870	0.35
2 ½	1.750	2.500	2.370	0.54
3	1.750	3.000	2.870	0.65
4	1.750	4.000	3.384	0.78



15WFF ACME THREADED FLAT FACE FERRULE

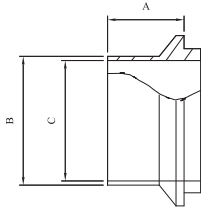
SIZE (TUBE O.D)	A	B	C	APPROX WT. (LBS.)
1	0.625	1.000	.870	0.15
1 ½	0.625	1.500	1.370	0.16
2	0.750	2.000	1.870	0.28
2 ½	0.844	2.500	2.370	0.44
3	0.875	3.000	2.870	0.60
4	1.062	4.000	3.834	1.10



OTHER FITTINGS

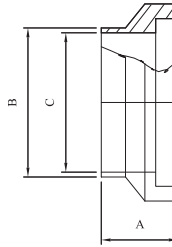
14WI LINE FERRULE

SIZE (TUBE O.D.)	A	B	C	WEIGHT (LBS)
1	19/32	1	7/8	.24
1½	19/32	1½	1 3/8	.18
2	25/32	2	1 7/8	.30
2½	27/32	2½	2 7/8	.60
3	29/32	3	2 27/32	.80
4	1 1/32	4	3 27/32	1.00
6	27/32	6	5 25/32	2.80



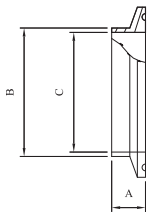
15WI LINE FERRULE

SIZE (TUBE O.D.)	A	B	C	WEIGHT (LBS)
1	25/32	1	7/8	.32
1½	15/16	1½	1 3/8	.16
2	1 1/32	2	1 7/8	.40
2½	1 5/32	2½	2 7/8	.60
3	1 7/32	3	2 27/32	.80
4	1 11/32	4	3 27/32	1.00
6	1 1/16	6	5 25/32	2.80



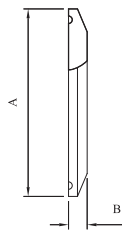
TV14X SCH 5 FERRULE

SIZE (TUBE O.D.)	A	B	C	WEIGHT (LBS)
1	1/2	1.315	1.185	.10
1½	1/2	1.900	1.770	.10
2	1/2	2.375	2.245	.20
2½	1/2	2.875	2.709	.30
3	1/2	3.500	3.334	.35
4	5/8	4.500	4.334	.40
6	7/8	6.625	6.407	.53
8	7/8	8.625	8.407	1.35
10	1	10.740	10.490	1.95



TV16 SOLID END CAP

SIZE (TUBE O.D.)	A	B	WEIGHT (LBS)
1	1.984	.250	.30
1½	2.516	.250	.30
2	3.047	.250	.44
2½	3.579	.250	.64
3	4.125	.312	.90
4	5.125	.375	1.25
6	7.195	.438	2.88



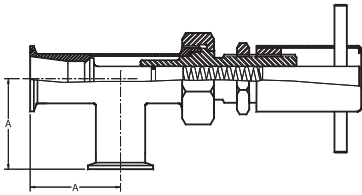
MISCELLANEOUS COMPONENTS

Following are some of the in-line components that Tri-Canada offers to support process systems.

D60RT RELIEF VALVES

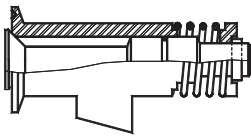
SIZE (TUBE O.D.)	A		APPROX. WT.(LBS.)
	Kwik Clamp	ACME Thread	
¾	2.375	N/A	4.00
1	2.375	1.813	4.50
1 ½	2.750	2.375	5.00
2	3.500	2.781	6.50
2 ½	3.500	3.188	9.00
3	3.750	3.500	11.00

(KWIK CLAMP END CONNECTION SHOWN)



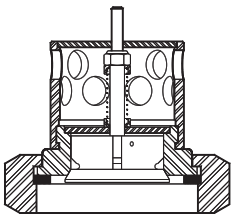
TC30S SAMPLE VALVE

SIZE	APPROX. WT.(LBS.)
1	1.20
1 ½	1.20



169 VACUUM VALVE

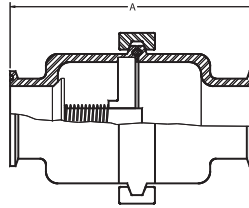
SIZE	APPROX. WT.(LBS.)
2	1.50
3	2.30



45H CHECK VALVES *

SIZE (TUBE O.D.)	A			APPROX. WT.(LBS.)
	Kwik Clamp	ACME Thread	Butt Weld	
½	4.313	N/A	4.313	1.75
¾	4.313	N/A	4.313	1.75
1	5.125	6.500	5.125	2.70
1 ½	5.125	6.563	5.125	3.20
2	5.063	6.500	5.063	4.20
2 ½	6.266	7.953	6.266	5.20
3	6.125	7.938	6.125	7.00
4	6.938	9.375	6.938	10.00

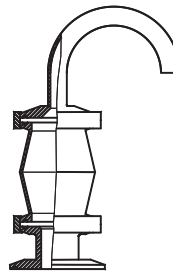
(KWIK CLAMP END CONNECTION SHOWN)



* CHECK VALVES ARE AVAILABLE IN ANY TYPE OF END CONNECTIONS

60ARV AIR ELIMINATOR

CONNECTION SIZE	APPROX. WT.(LBS.)
1	2.50
2	2.65
2 ½	2.80
3	3.35
4	3.70



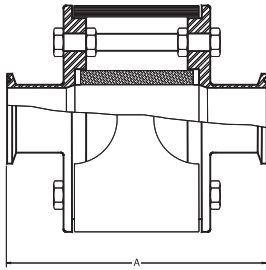
MISCELLANEOUS COMPONENTS

162S SHIELDED * INLINE SIGHT GLASS OBSERVER

SIZE (TUBE O.D.)	A			APPROX. WT.(LBS.)
	Kwik Clamp	ACME Thread	Butt Weld	
1	5.750	6.250	5.750	4.50
1 ½	5.750	6.500	5.750	5.40
2	5.750	6.500	5.750	7.50
2 ½	7.250	8.500	7.250	10.80
3	7.250	8.500	7.250	12.90
4	7.250	8.500	7.250	18.50

(KWIK CLAMP END CONNECTION SHOWN)

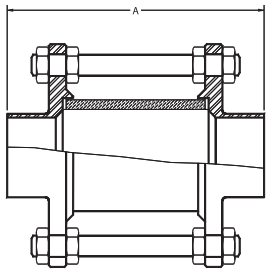
* ACRYLIC SHIELD



162 INLINE SIGHT GLASS OBSERVER

SIZE (TUBE O.D.)	A			APPROX. WT.(LBS.)
	Kwik Clamp	ACME Thread	Butt Weld	
1	5.625	6.125	5.625	2.60
1 ½	5.625	6.375	5.625	3.50
2	5.625	6.375	5.625	5.40
2 ½	6.125	7.375	6.125	6.10
3	7.250	8.500	7.250	8.20
4	7.375	8.625	7.375	14.00

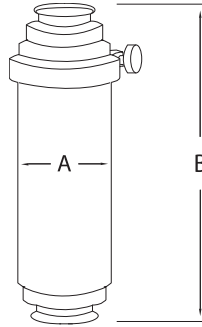
(BUTT WELD END CONNECTION SHOWN)



NOTE: PYREX GLASS USED IN BOTH MODELS

IN-LINE STRAINER

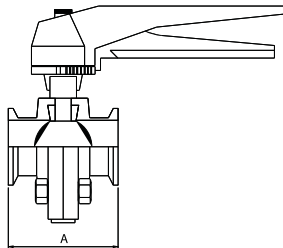
SIZE	A	B
1	4	15.75
1.5	4	15.75
2	4	15.75
2.5	4.5	15.75
3	4.5	15.75



ALSO OFFERED: LONG IN-LINE STRAINERS, LONG + SHORT SIDE ENTRY STRAINERS AND REPLACEMENT MESH OVERSCREENS

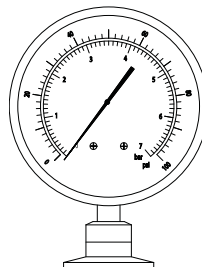
P88 BUTTERFLY VALVE

SIZE	A
1	2 33/64
1 ½	2 53/64
2	2 53/64
2 ½	3
3	3
4	4 3/32
6	5 23/64



ALSO OFFERED: ACTUATED BUTTERFLY VALVES, BUTTWELD CONNECTIONS AND REPLACEMENT SEATS

SANITARY PRESSURE GAUGE



AVAILABLE IN VARIOUS PRESSURE RANGES WITH 3/4", 1.5" OR 2" TRI-CLAMP® DIAPHRAGM SEAL.

ALSO OFFERED: MPT THREADED GAUGES, THERMOMETERS.

SANITARY HOSE ASSEMBLIES

Each sanitary hose assembly uses 316L stainless steel fittings radially crimped onto the hose to prevent any contamination between the hose barb and the hose I.D., to assure a smooth flow through the hose and fitting with minimal pressure drop and to ensure safety by preventing fitting blow-off when hose is operated within design specifications.

ADVANTAGES

- Total leak-proof seal between hose and fitting even at extreme pressure and temperature. This design prevents product entrapment when pressure is released.
- Three-way interlocking seal:
 1. Crimp ferrule is compression crimped into the hose cover.
 2. Serrations of barb 'bite' into the innercore tube.
 3. Ferrule and hose insert are totally locked together during crimp.
- Sanitary fitting design features ultra-smooth internal surface finishes exceeding Pharmacopoeia Class VI, FDA, USDA and 3A minimum standards. These designs also incorporate an internal radius chamfer promoting a smooth flow between hose and fitting, minimizing chances of bacteria entrapment.
- Fully sealed fitting design protects against wicking or exposure to chemicals or cleaning materials that might swell or deteriorate interior hose reinforcement or cover.
- Smooth exterior - no clamps or bolts to catch on surrounding surfaces or to cut workers' hands. No retorquing necessary.
- Complete range of 316L stainless steel fittings available from stock.

HOSE MANUFACTURERS

- Gates
- St. Gobain
- Coreflex
- Kuritec
- Sani-Tech
- Purefit
- Flexible Components

AVAILABLE IN:

- Teflon
- Silicone
- Food-Grade Rubber
- PVC
- Smooth-bore
- Convolute
- Stainless Steel Braided

SANITARY GASKETS

PROPERTY	NITRILE (BUNA - N)	ETHYLENE - PROPYLENE (EPDM)	SILICONE	FLUOROELASTOMER (VITON®)	TEFLON®	TUF-STEEL
Tensile Strength	Fair/Good	Good/Excellent	Good	Good/Excellent	Excellent	Excellent
Electrical Properties	Poor	Excellent	Excellent	Good	Excellent	Excellent
Weather Resistance	Good	Excellent	Excellent	Good	Excellent	Excellent
Ozone Resistance	Fair	Excellent	Excellent	Excellent	Excellent	Excellent
Heat Resistance	Good (225°F/107°C)	Excellent (275°F/135°C)	Excellent (450°F/232°C)	Excellent (400°F/204°C)	Excellent (450°F/232°C)	Excellent (450°F/ 232°C)
Cold Resistance	Fair/Good (-40°F/C)	Good/Excellent (-55°F/-48°C)	Excellent (-80°F/-62°C)	Good (-20°F/-29°C)	Fair (-110°F/-79°C)	Good (-20°F/-29°C)
Steam Resistance	Good	Good	Good	Excellent	Excellent	Excellent
Tear Resistance	Good	Good	Excellent	Fair	Excellent	Excellent
Abrasion Resistance	Good	Good/Excellent	Good/Excellent	Good	Excellent	Excellent
Acid Resistance	Good	Good/Excellent	Good	Good	Excellent	Excellent
Petroleum Oil	Excellent	Poor	Good	Excellent	Excellent	Excellent
Flame Resistance	Poor	Poor	Poor	Good	Excellent	Excellent
Vegetable Oil	Good	Good (Most)	Good (Intermittent)	Excellent	Excellent	Excellent

In addition to the above standard gaskets, of which we stock sizes ranging from ½" to 12", Tri-Canada also inventories screen gaskets (stainless steel in various mesh sizes bonded to sanitary gasket material) and orifice plates, made of either solid gasket material or of stainless steel plate surrounded by a split gasket.

We also work closely with a very innovative company called Rubber Fab Technologies Group, which has developed numerous specialty products designed to address various process and validation issues.

OTHER SANITARY FLUID HANDLING PRODUCTS AVAILABLE FROM TRI-CANADA

SANITARY HOSE ASSEMBLIES

BUTTERFLY VALVES

DIAPHRAGM VALVES

CENTRIFUGAL PUMPS

POSITIVE PUMPS

SPECIALTY ELASTOMERS AND GASKETS

MIXERS

TUBING

IN-LINE STRAINERS

**PLEASE VISIT OUR WEBSITE AT
WWW.TRICANADA.COM
FOR OUR COMPLETE PRODUCT LINE**

Tri-Canada

At Tri-Canada, we pride ourselves on responsiveness and on our technical knowledge. If you are having trouble sourcing a particular item, or are dissatisfied with the responsiveness of a particular vendor, please give us a call. Buyers become corporate heroes when they find the identical product faster and at a better price. Maybe we can help.

Tri-Canada Industries Ltd.

7033 Telford Way
Mississauga, ON, L5S 1V4

Phone: 905.677.9000
Fax: 905.677.4988
Toll-Free: 1.800.486.7863

www.tricanada.com
sales@tricanada.com